

EXPRESSIONS OF INTEREST

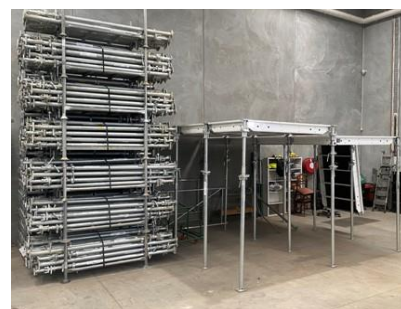
1,000mt² Of Prop & Pan Formwork, Suspended Slab System

Located At: Dominion Group
191 Kensington Road, West Melbourne, Victoria

388 x Panels, 1.8mt x 1.2mt
20 x Stripping Heads
80 x Simple Filler Beams, 1.8mt

76 x Panels, 1.2mt x 1.2mt
16 x Gate Braces, 1.8mt
80 x Simple Filler Beams, 1.2mt

560 x Hot Dip Gal B35 Props, 3.5mt
16 x Gate Braces, 1.2mt
4 x Erection Ledgers



Contact Mr Simon Wade On (03) 96874955 Or Email swade@dominiongroup.net.au

TERMS & CONDITIONS:

- This Sale Is GST Inclusive & A Buyers Premium (GST Inclusive) Will Be Added To The Knockdown Price.
- A Variety Of Payment Options Are Available i.e. EFT, Debit Or Credit Card (Credit Card Charges Of 1.1% Will Apply).
- Cash Payments No Longer Accepted.
- Payment In Full Is Required Within 48 Hours Of Auction Close. A Late Payment Fee Of 2% (GST Inclusive) Per Day (Capped At 6%) Applies To All Lots.
- A 1% (GST Inclusive) Administration Fee Will Be Added To The Knockdown Price On All Lots.
- All Vehicles Will Be Sold Without Plates.
- Covered Footwear Must Be Worn By All Patrons. E & O.

Stay Connected
Dominion Group (Vic) Pty Ltd
191 Kensington Road
WEST MELBOURNE VIC 3003
AUSTRALIA



www.dominiongroup.net.au
Call: +61 3 9687 4955
Fax: +61 3 9687 4966
Email: swade@dominiongroup.net.au

Celebrating 37 Years 1986 - 2023